

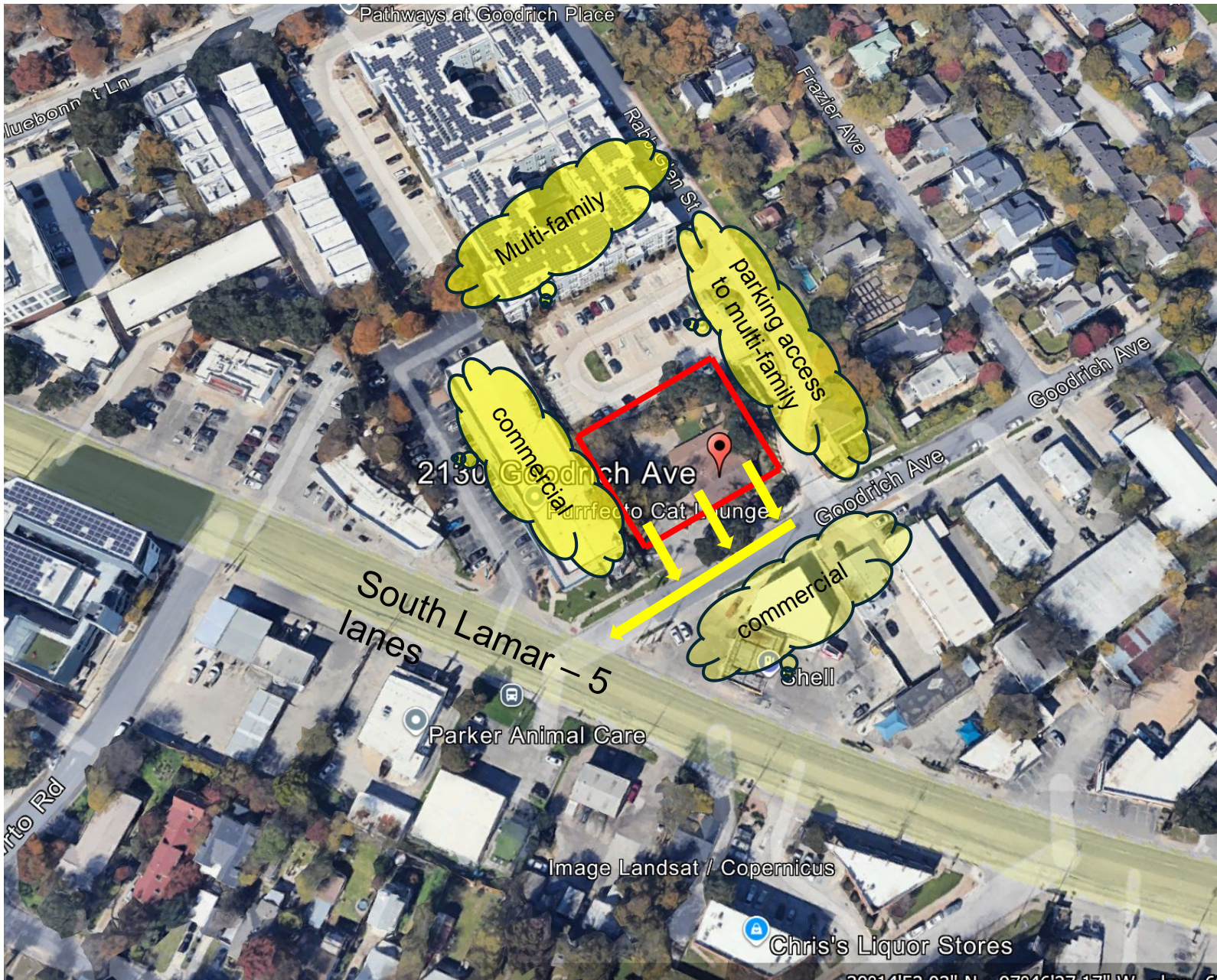


- 375 units
- 126 units/acre
- Direct access to Burnet

- Surrounded 3 sides by commercial and multi-family
- No traffic cut-through directed onto neighborhood streets

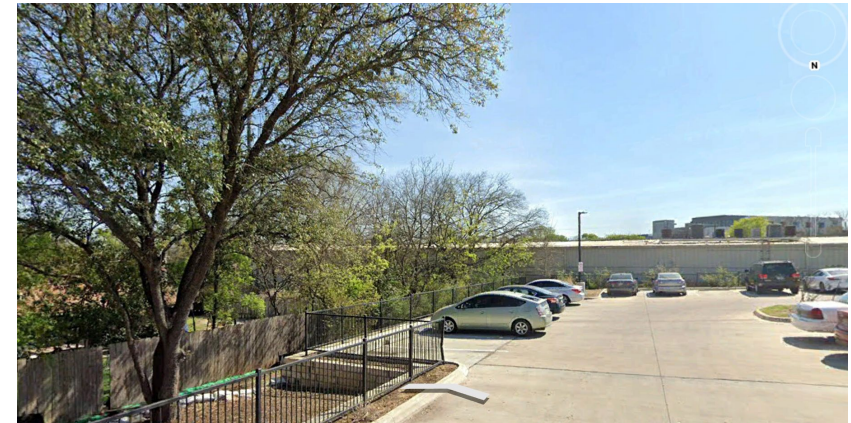


2.96 acres
Brentwood Multifamily
5401 Burnet Rd.

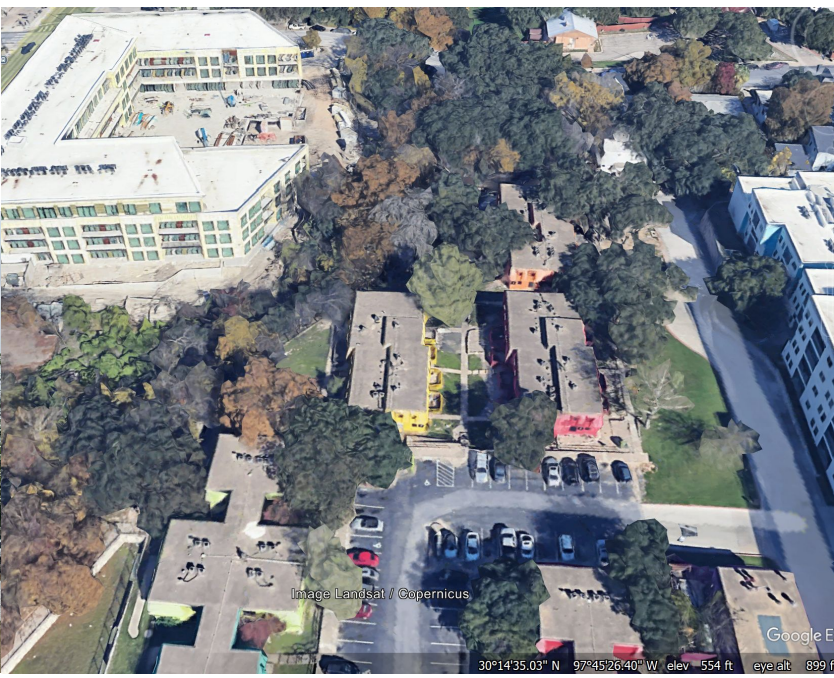
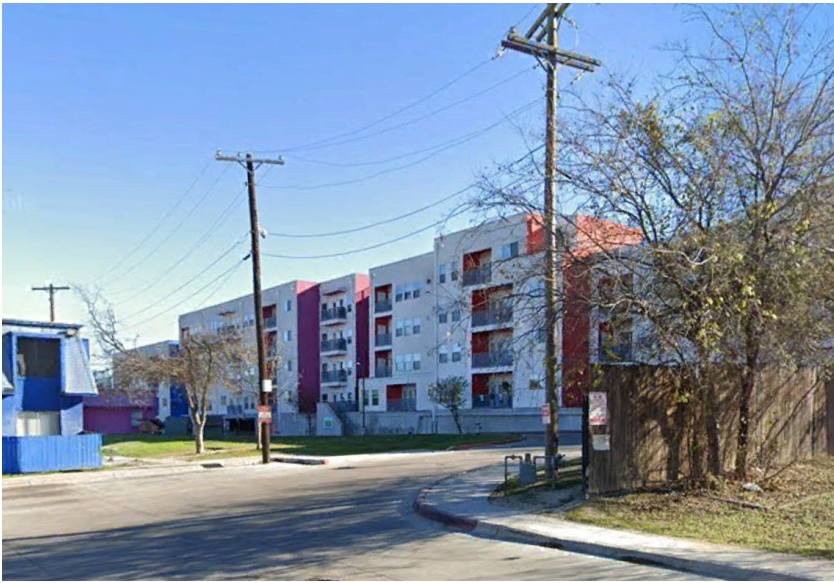


- 55 units
- 130 units/acre
- Direct access to South Lamar

- Surrounded by commercial and multi-family
- No traffic cut-through on residential streets

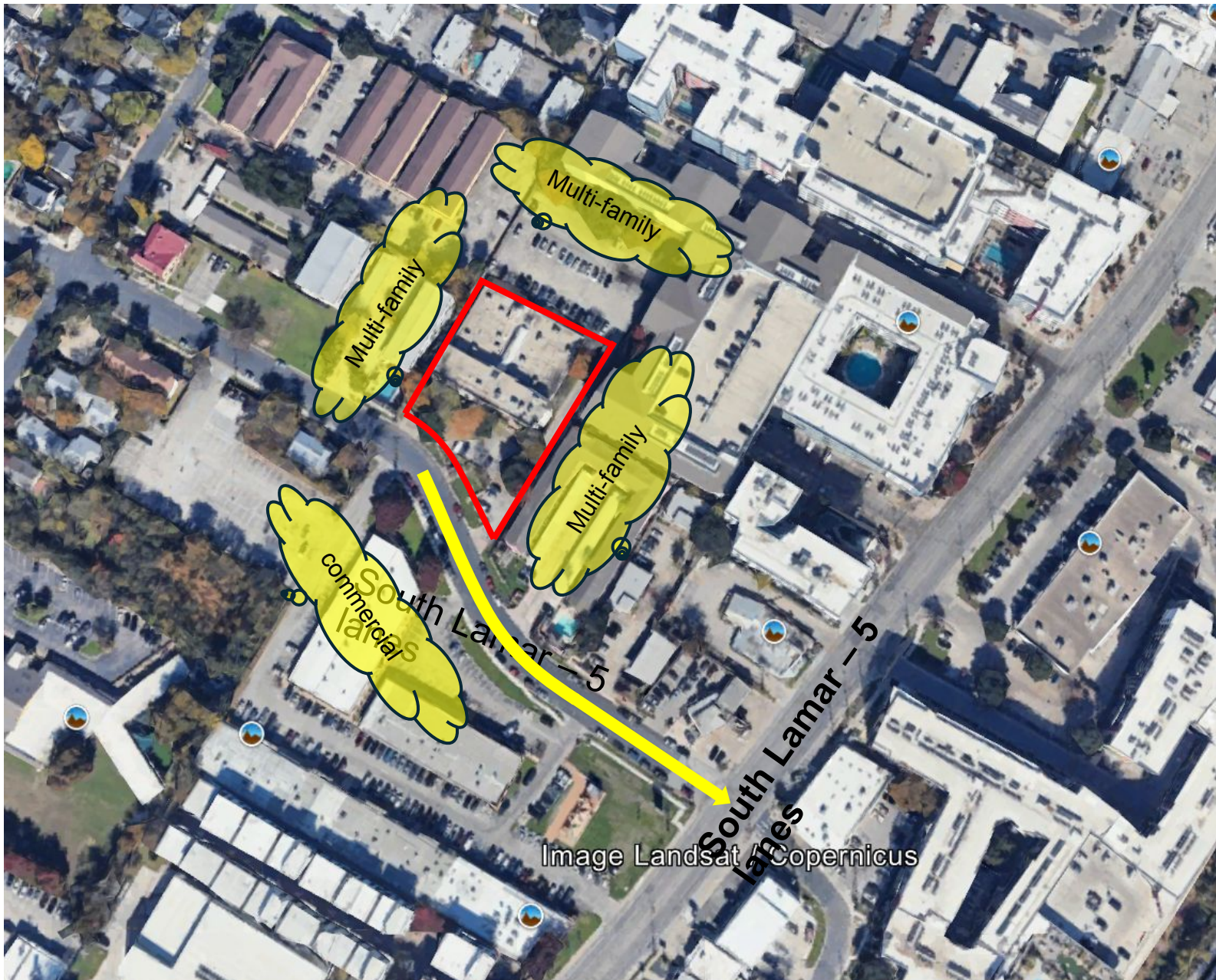


2130 Goodrich Avenue
0.42 acres.



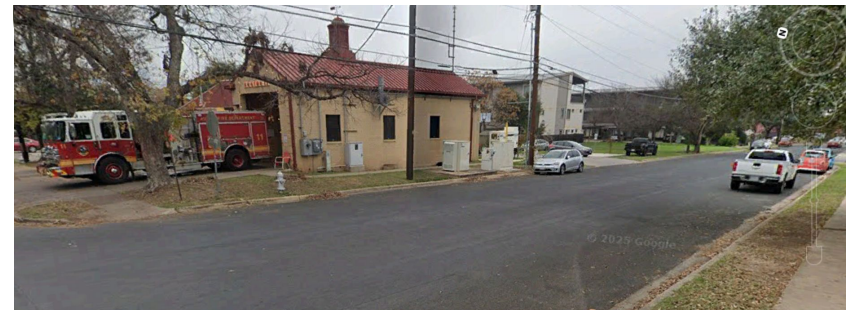
- 425 units
- 85 units/acre
- Direct access to Oltorf St.
- No traffic cut-through residential streets
- Surrounded by commercial and multi-family
- Previously zoned multi-family

Oak Creek Village
 4.95 acres
 2302 Darwood



- 187 units
- 105 units/acre
- Access from Collier St. (all commercial) to South Lamar

- No traffic cut-through residential streets
- Surrounded by commercial and multi-family
- Previously zoned multi-family



1430 Collier Street
1.77 acres

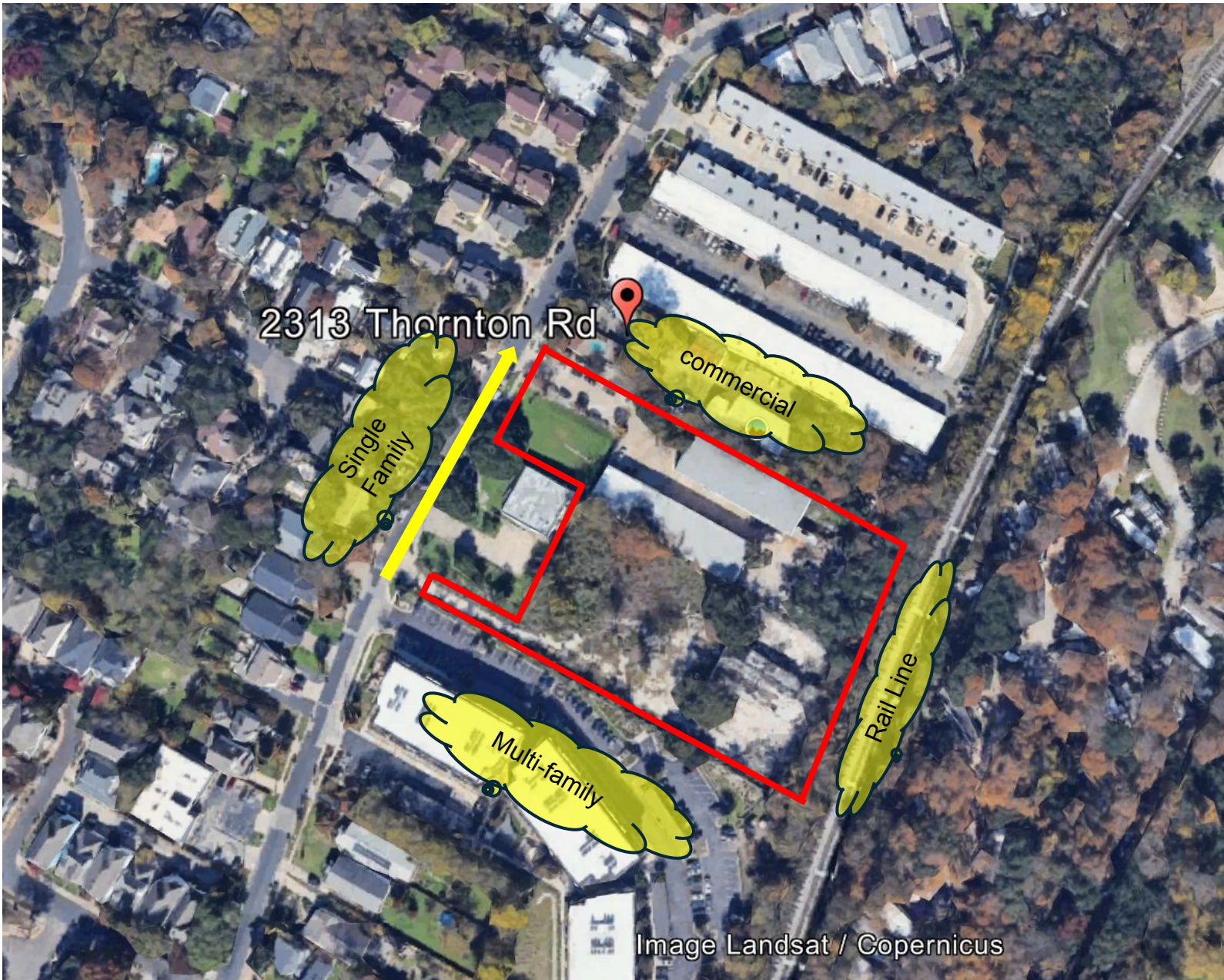
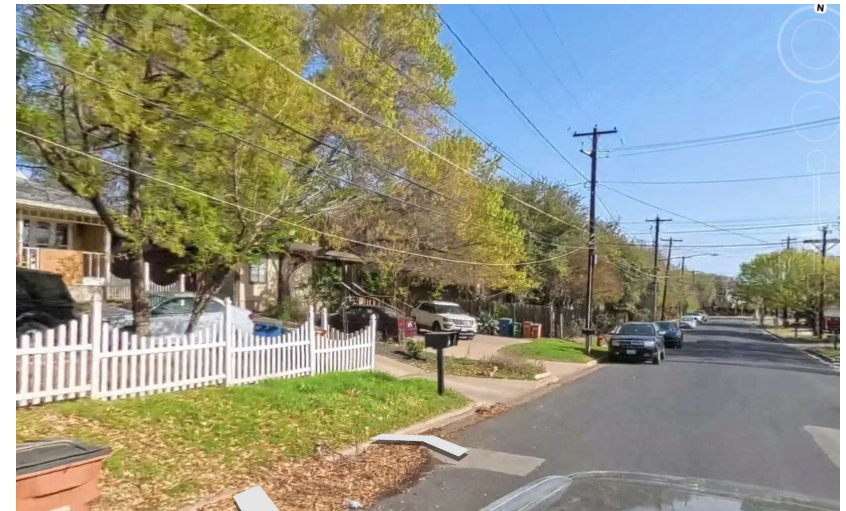


Image Landsat / Copernicus

- 350 units
- 83 units/acre
- Difficult access to Oltorf via Thornton Road

- Traffic forced onto residential streets
- Surrounded by commercial, multi-family, single family and industrial
- Previously zoned industrial



2313 Thornton Road
4.3 acres



- 684 units
- 36 units/acre
- Shady Lane to Airport or east 7th

- No traffic cut-through residential streets
- Surrounded by commercial, multi-family, single family and park land
- Affordable housing for teachers on site



Anita Ferales Coy
10.8 acres 4900 Gonzales St.

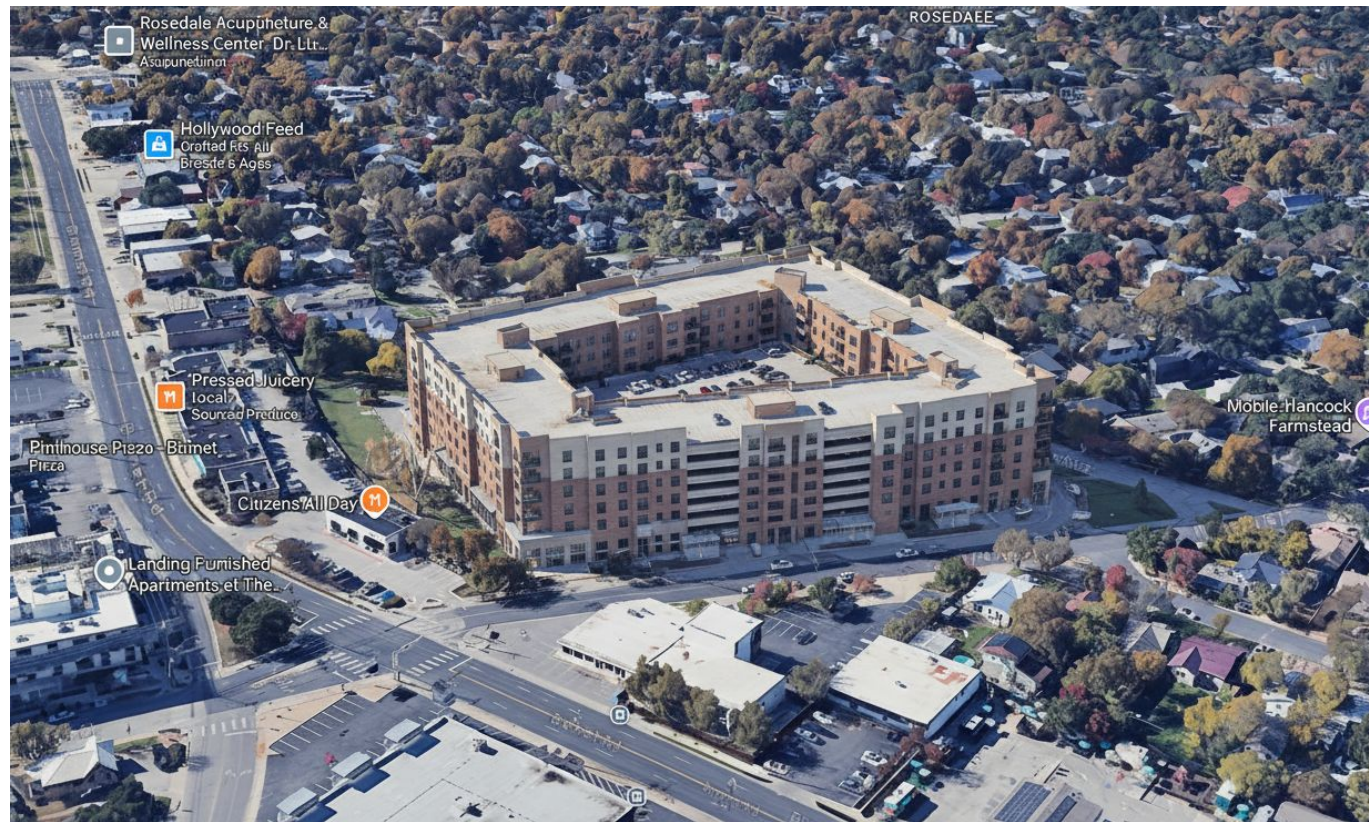


- 435 units
- 94 units/acre
- No direct access to Burnet Road

- Traffic forced to cut-through residential streets to avoid 49th and Burnet
- Surrounded by single family on 3 sides, commercial on east



Rosedale School
4.6 acres 2117 West 49th St.



- 435 units
- 94 units/acre
- No direct access to Burnet Road

- Traffic forced to cut-through residential streets to avoid 49th and Burnet
- Surrounded by single family on 3 sides, commercial on east

Rosedale School
14.6 acres 2117 West 49th St.